

Validated for transport applications



As you would expect from a member of the Rail Industry Association, Global air preparation meets the test specification standards enabling the Global series to be used as a validated product in a variety of rail applications.



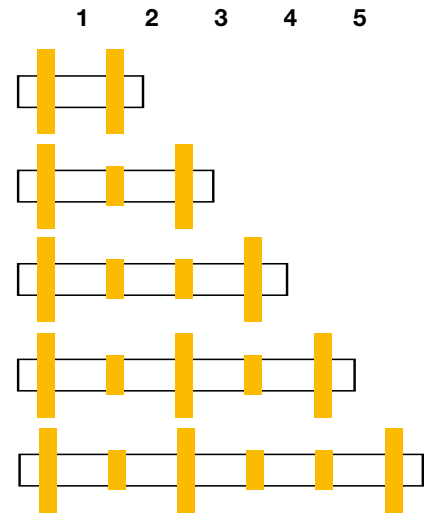
Railway Industry Association

CEI/ICE 61373 1999-1 Category 2 (BS EN 61373:1999)

Recommended mounting / fixation method for use in transportation applications.

- The use of a port block kit and T-bracket should be used at all times (angle / L-brackets should not be used in rail applications)
- Additional security is recommended with the use of 'vibration proof adhesive' on the wall mounting screws to the port / connector block
- Inlet (P1) and Outlet (P2) ports should always have a T-Bracket fixation to eliminate product cantilever stress
- 'L' brackets should not be used in the use for rail service

Position of T-Brackets for multiple units

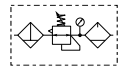


For illustration purposes only

**Popular Combinations:** Inlet pressure 10 bar (145 psig), Secondary pressure 6.3 bar (91.3 psig), 1 bar (14.5 psig) pressure drop.



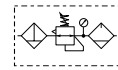
**Filter + Regulator + Lubricator Combinations, Poly bowl**  
**5 micron element, 8 bar (116 psig) regulator + gauge and wall mounting brackets**



Port size	Flow	Manual drain	Weight	Pulse drain	Weight
1/4"	13 dm <sup>3</sup> /s 27 (scfm)	<b>P31CB12GEMNTLNW</b>	0.46 kg (1.01 lbs)	<b>P31CB12GEBNTLNW</b>	0.46 kg (1.01 lbs)



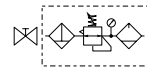
**Filter/Regulator + Lubricator Combinations, Poly bowl**  
**5 micron element, 8 bar (116 psig) regulator + gauge and wall mounting brackets**



Port size	Flow	Manual drain	Weight	Pulse drain	Weight
1/4"	14 dm <sup>3</sup> /s 28 (scfm)	<b>P31CA12GEMNTLNW</b>	0.35 kg (0.77 lbs)	<b>P31CA12GEBNTLNW</b>	0.35kg (0.77 lbs)



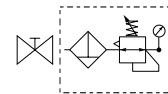
**Ball Valve + Filter/Regulator + Lubricator Combinations, Poly bowl**  
**5 micron element, 8 bar (116 psig) regulator + gauge and wall mounting brackets**



Port size	Flow	Manual drain	Weight	Pulse drain	Weight
1/4"	14 dm <sup>3</sup> /s 28 (scfm)	<b>P31QA12GEMNTLNW</b>	0.35 kg (0.77 lbs)	<b>P31QA12GEBNTLNW</b>	0.35kg (0.77 lbs)



**Ball Valve + Filter/Regulator Combinations + Poly bowl**  
**5 micron element, 8 bar Regulator + Gauge and Wall Mounting Brackets**



Port size	Flow	Manual drain	Weight	Pulse drain	Weight
1/4"	14 dm <sup>3</sup> /s 28 (scfm)	<b>P31QN12GEMNTW</b>	0.4 kg (0.88 lbs)	<b>P31QN12GEBNTW</b>	0.4 kg (0.88 lbs)

<b>P 3 1</b>					<b>E</b>		<b>N</b>		<b>LN</b>	<b>W</b>	
<b>Combination</b>		<b>Thread type</b>		<b>Port size</b>	<b>Drain type</b>		<b>Adjustment range</b>		Add only for options with Lubricator		
Combination <b>C</b>		BSPP <b>1</b>		1/4 <b>2</b>	Manual drain <b>M</b>		<b>With square gauge</b>				
Shut off + Combi <sup>1</sup> <b>Q</b>		NPT <b>9</b>			Pulse drain <b>B</b>		2 bar * <b>V</b>				
							4 bar <b>S</b>				
							8 bar ** <b>T</b>				
							<b>Without gauge</b>				
							2 bar Y				
							4 bar L				
							8 bar N				
							16 bar H				
<b>Combination type</b>		<b>Bowl type</b>									
F/R+L <b>A</b>		Poly bowl with bowl guard <b>G</b>									
F+R+L <b>B</b>		Metal bowl without sight glass <b>M</b>									
F/R <b>N</b>											

**Note:** All bowl types are the same for each component

**Example:** If a "G" is specified for a F+L, both units would get a poly bowl with bowl guard.

\* Unit comes with 0-4 bar, gauge respectively

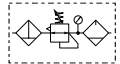
\*\* Unit comes with 0-10 bar, gauge respectively

<sup>1</sup> Option not available with F+R+L  
 Bar gauges fitted to BSPP  
 PSI gauges fitted to NPT

**Popular Combinations:** Inlet pressure 10 bar (145 psig), Secondary pressure 6.3 bar (91.3 psig), 1 bar (14.5 psig) pressure drop.



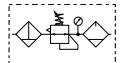
**Filter + Regulator + Lubricator Combinations, Poly bowl**  
**5 micron element, 8 bar (116 psig) regulator + gauge and wall mounting brackets**



Port size	Flow		Manual drain	Weight	Auto drain	Weight
1/4"	20 dm³/s	42 (scfm)	<b>P32CB12GEMNGLNW</b>	1.29 kg (2.84 lbs)	<b>P32CB12GEANGLNW</b>	1.29 kg (2.84 lbs)
3/8"	32 dm³/s	68 (scfm)	<b>P32CB13GEMNGLNW</b>	1.29 kg (2.84 lbs)	<b>P32CB13GEANGLNW</b>	1.29 kg (2.84 lbs)
1/2"	40 dm³/s	85 (scfm)	<b>P32CB14GEMNGLNW</b>	1.29 kg (2.84 lbs)	<b>P32CB14GEANGLNW</b>	1.29 kg (2.84 lbs)



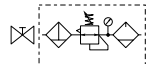
**Filter/Regulator + Lubricator Combinations, Poly bowl**  
**5 micron element, 8 bar (116 psig) regulator + gauge and wall mounting brackets**



Port size	Flow		Manual drain	Weight	Auto drain	Weight
1/4"	22 dm³/s	45 (scfm)	<b>P32CA12GEMNGLNW</b>	1.03 kg (2.27 lbs)	<b>P32CA12GEANGLNW</b>	1.03 kg (2.27 lbs)
3/8"	33 dm³/s	70 (scfm)	<b>P32CA13GEMNGLNW</b>	1.03 kg (2.27 lbs)	<b>P32CA13GEANGLNW</b>	1.03 kg (2.27 lbs)
1/2"	43 dm³/s	90 (scfm)	<b>P32CA14GEMNGLNW</b>	1.03 kg (2.27 lbs)	<b>P32CA14GEANGLNW</b>	1.03 kg (2.27 lbs)



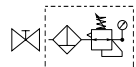
**Ball Valve + Filter/Regulator + Lubricator Combinations, Poly bowl**  
**5 micron element, 8 bar (116 psig) regulator + gauge and wall mounting brackets**



Port size	Flow		Manual drain	Weight	Auto drain	Weight
3/8"	33 dm³/s	70 (scfm)	<b>P32QA13GEMNGLNW</b>	1.03 kg (2.27 lbs)	<b>P32QA13GEANGLNW</b>	1.03 kg (2.27 lbs)
1/2"	43 dm³/s	90 (scfm)	<b>P32QA14GEMNGLNW</b>	1.03 kg (2.27 lbs)	<b>P32QA14GEANGLNW</b>	1.03 kg (2.27 lbs)



**Ball Valve + Filter/Regulator Combinations + Poly bowl**  
**5 micron element, 8 bar Regulator + Gauge and Wall Mounting Brackets**



Port size	Flow		Manual drain	Weight	Auto drain	Weight
3/8"	33 dm³/s	70 (scfm)	<b>P32QN13GEMNGW</b>	1.1 kg (2.42 lbs)	<b>P32QN13GEANGW</b>	1.1 kg (2.42 lbs)
1/2"	43 dm³/s	90 (scfm)	<b>P32QN14GEMNGW</b>	1.1 kg (2.42 lbs)	<b>P32QN14GEANGW</b>	1.1 kg (2.42 lbs)

**P 3 2**      **E**      **N**      **LN**      **W**

<b>Combination</b>	<b>Thread type</b>	<b>Port size</b>	<b>Drain type</b>	<b>Adjustment range</b>	<b>Add only for options with Lubricator</b>
Combination <b>C</b>	BSPP <b>1</b>	1/4 <b>2</b>	Auto drain <b>A</b>	<b>With round gauge</b>	
Shut off + Combination <sup>1</sup> <b>Q</b>	NPT <b>9</b>	3/8 <b>3</b>	Manual drain <b>M</b>	0-2 bar; 0-30 psi; 0.2 MPa <b>Z</b>	
		1/2 <b>4</b>		4 bar; 60 psi; 0.4 MPa <b>M</b>	
				8 bar; 125 psi; 0.8 MPa <b>G</b>	
				<b>Without gauge</b>	
<b>Combination type</b>	<b>Bowl type</b>			2 bar      Y	
F/R+L <b>A</b>	Poly bowl with bowl guard <b>G</b>			4 bar      L	
F+R+L <b>B</b>	Metal bowl with sight glass <b>S</b>			8 bar      N	
F/R <b>N</b>				17 bar      H	

<sup>1</sup> Option not available with F+R+L and 1/4" port size (2)

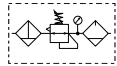
**Note:** All bowl types are the same for each component

**Example:** If a "G" is specified for a F+L, both units would get a poly bowl with bowl guard.

**Popular Combinations:** Inlet pressure 10 bar (145 psig), Secondary pressure 6.3 bar (91.3 psig), 1 bar (14.5 psig) pressure drop.



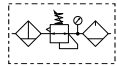
**Filter + Regulator + Lubricator Combinations, Poly bowl  
5 micron element, 8 bar (116 psig) regulator + gauge and wall mounting brackets**



Port size	Flow	Manual drain	Weight	Auto drain	Weight
1/2"	43 dm <sup>3</sup> /s 90 (scfm)	<b>P33CB14GEMNGLNW</b>	1.84 kg (4.06 lbs)	<b>P33CB14GEANGLNW</b>	1.84 kg (4.06 lbs)
3/4"	52 dm <sup>3</sup> /s 110 (scfm)	<b>P33CB16GEMNGLNW</b>	1.84 kg (4.06 lbs)	<b>P33CB16GEANGLNW</b>	1.84 kg (4.06 lbs)



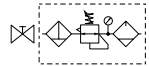
**Filter/Regulator + Lubricator Combinations, Poly bowl  
5 micron element, 8 bar (116 psig) regulator + gauge and wall mounting brackets**



Port size	Flow	Manual drain	Weight	Auto drain	Weight
1/2"	52 dm <sup>3</sup> /s 110 (scfm)	<b>P33CA14GEMNGLNW</b>	1.51 kg (3.33 lbs)	<b>P33CA14GEANGLNW</b>	1.51 kg (3.33 lbs)
3/4"	71 dm <sup>3</sup> /s 150 (scfm)	<b>P33CA16GEMNGLNW</b>	1.51 kg (3.33 lbs)	<b>P33CA16GEANGLNW</b>	1.51 kg (3.33 lbs)



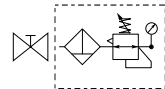
**Ball Valve + Filter/Regulator + Lubricator Combinations, Poly bowl  
5 micron element, 8 bar (116 psig) regulator + gauge and wall mounting brackets**



Port size	Flow	Manual drain	Weight	Auto drain	Weight
1/2"	52 dm <sup>3</sup> /s 110 (scfm)	<b>P33QA14GEMNGLNW</b>	1.51 kg (3.33 lbs)	<b>P33QA14GEANGLNW</b>	1.51 kg (3.33 lbs)
3/4"	71 dm <sup>3</sup> /s 150 (scfm)	<b>P33QA16GEMNGLNW</b>	1.51 kg (3.33 lbs)	<b>P33QA16GEANGLNW</b>	1.51 kg (3.33 lbs)



**Ball Valve + Filter/Regulator Combinations + Poly bowl  
5 micron element, 8 bar Regulator + Gauge and Wall Mounting Brackets**



Port size	Flow	Manual drain	Weight	Auto drain	Weight
1/2"	52 dm <sup>3</sup> /s 110 (scfm)	<b>P33QN14GEMNGW</b>	1.7 kg (3.75 lbs)	<b>P33QN14GEANGW</b>	1.7 kg (3.75 lbs)
3/4"	71 dm <sup>3</sup> /s 150 (scfm)	<b>P33QN16GEMNGW</b>	1.7 kg (3.75 lbs)	<b>P33QN16GEANGW</b>	1.7 kg (3.75 lbs)

**P 3 3**      **E**      **N**      **L N**      **W**

<b>Combination</b>	<b>Thread type</b>	<b>Port size</b>	<b>Drain type</b>	<b>Adjustment range</b>	<b>Add only for options with Lubricator</b>
Combination <b>C</b>	BSPP <b>1</b>	1/2 <b>4</b>	Auto drain <b>A</b>	<b>With round gauge</b>	
Shut off + Combination <sup>1</sup> <b>Q</b>	NPT <b>9</b>	3/4 <b>6</b>	Manual drain <b>M</b>	0-2 bar; 0-30 psi; 0.2 MPa <b>Z</b>	
				4 bar; 60 psi; 0.4 MPa <b>M</b>	
				8 bar; 125 psi; 0.8 MPa <b>G</b>	

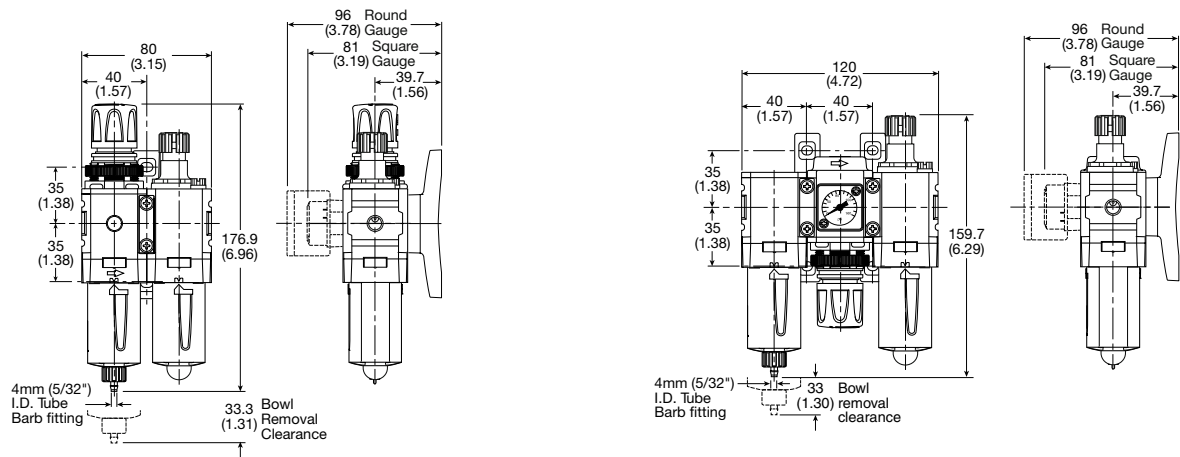
<sup>1</sup> Option not available with F+R+L

<b>Combination type</b>	<b>Bowl type</b>
F/R+L <b>A</b>	Poly bowl with bowl guard <b>G</b>
F+R+L <b>B</b>	Metal bowl with sight glass <b>S</b>
F/R <b>N</b>	

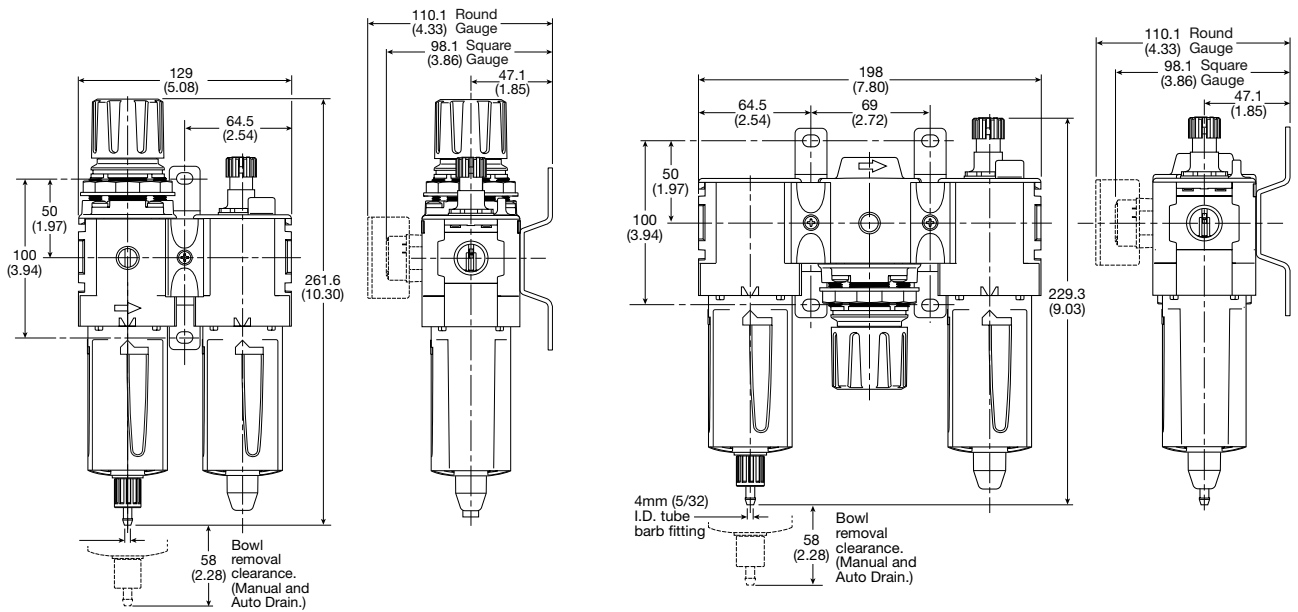
**Note:** All bowl types are the same for each component  
**Example:** If a "G" is specified for a F+L, both units would get a poly bowl with bowl guard.

Popular Combination Dimensions mm (inches)

P31C



P32C



P33C

