

**G1/8 - 4/3 Way Flat Slide Valves
 Series DRS**

Actuation System:

- Rotary lever
- Rotary switch



Operating information

| | | |
|---------------------------|---|--|
| System | Flat slide valve without automatic return to neutral position | |
| Mounting | 2 Screws M4 | |
| Tube connection | Thread | |
| Port size | Port P, A, B: G1/8 Port R: M5 | |
| Weight (mass) | 0.500 kg | |
| Installation | In any position | |
| Ambient temperature range | -10 °C to +55 °C | Note: Please consult us for operating temperatures below 0° C |
| Medium temperature range | -10 °C to +60 °C | |
| Medium | Filtered compressed air | |
| Lubrication | Oil mist lubrication compatible with Buna N | |

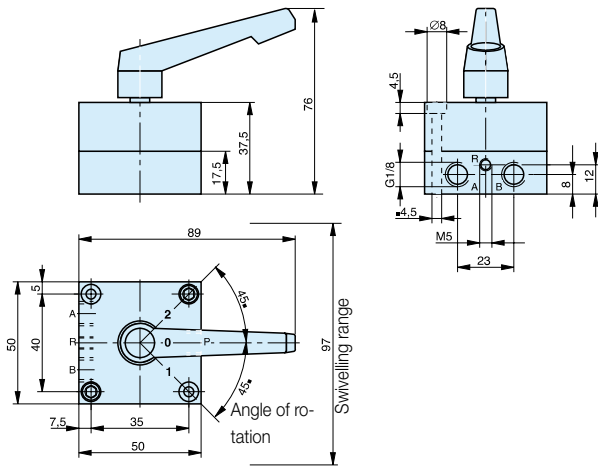
Pneumatic Characteristics

| | |
|--------------------------|------------|
| Nominal pressure | 6 bar |
| Operating pressure range | 0 – 10 bar |
| Nominal flow | 350 l/min |

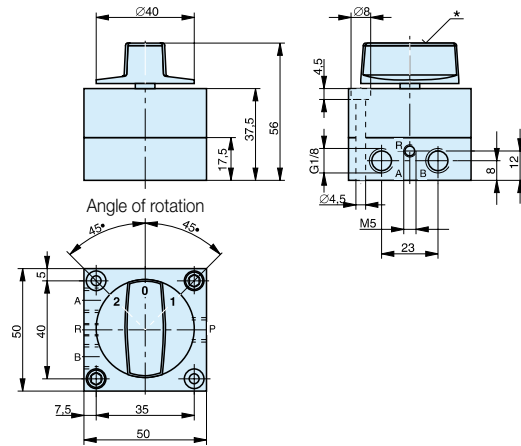
Actuation

| | |
|-----------------|---------|
| Manual control | Direct |
| Actuation force | ca. 6 N |

Rotary Lever – Type: DRS 412 .-1/8



Rotary Switch – Type: DRS 417 .-1/8



Port identification:
 A = 4 Outlet
 B = 2 Outlet
 R = 5 Exhaust
 P = 1 Pressure supply

* After removing the cover and loosening the mounting screws, the rotary switch is infinitely variable.

Order Instructions – 4/3 Way Flat Slide Valves, Series DRS

| Actuation | Symbol | Order Instructions | |
|--|--------|--------------------|-----------------|
| | | Type | Order code |
| Rotary lever Middle position pressurized | | DRS 412 B-1/8 | PA 10267 |
| Rotary lever Middle position vented | | DRS 412 E-1/8 | PA 10266 |
| Rotary lever Middle position closed | | DRS 412G-1/8 | PA 10268 |
| Rotary switch Middle position pressurized | | DRS 417 B-1/8 | PA 10264 |
| Rotary switch Middle position vented | | DRS 417 E-1/8 | PA 10263 |
| Rotary switch Middle position closed | | DRS 417 G-1/8 | PA 10265 |